

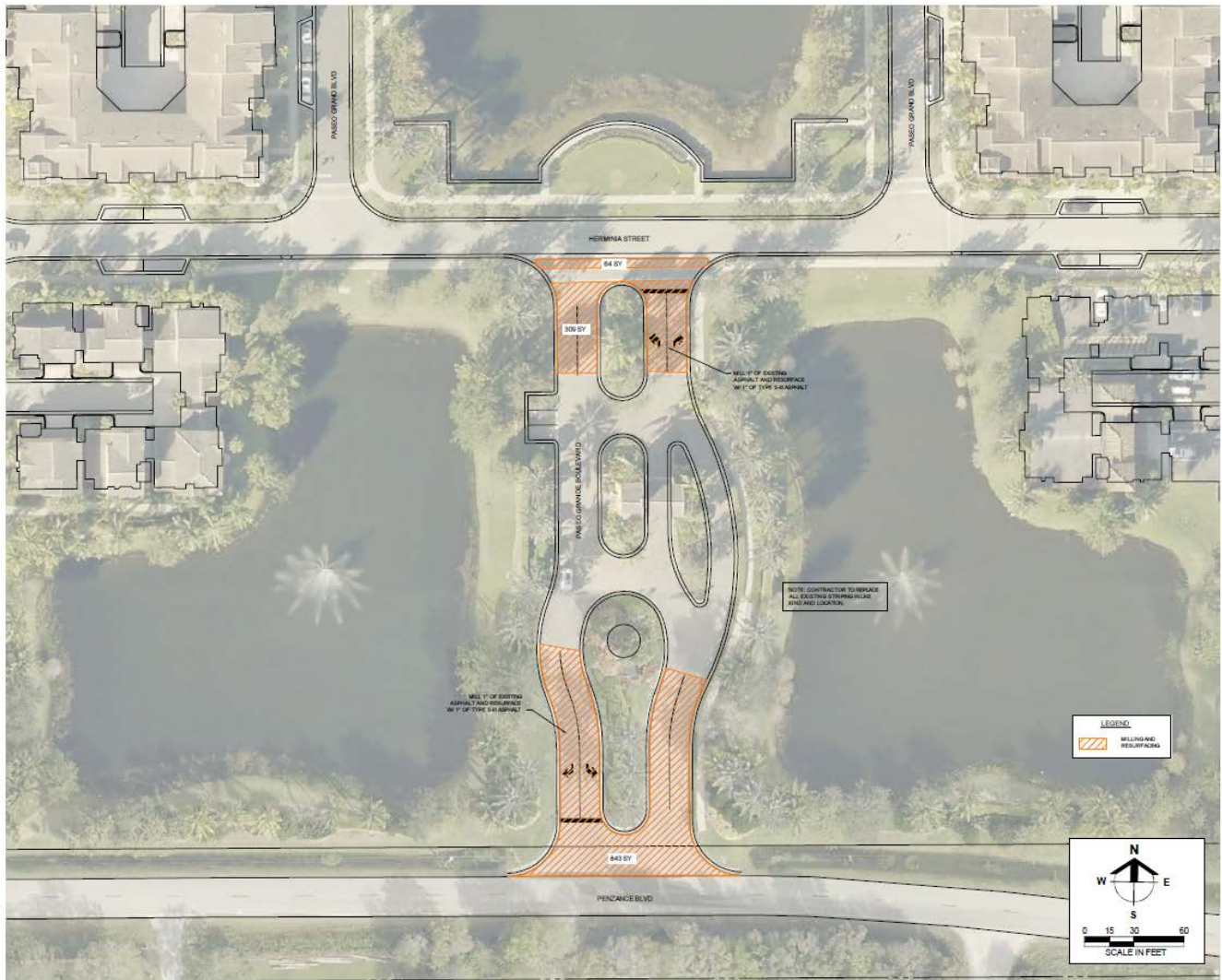
PASEO COMMUNITY DEVELOPMENT DISTRICT

DISTRICT OFFICE · 9530 MARKETPLACE ROAD · SUITE 206 · FT. MYERS, FLORIDA 33912

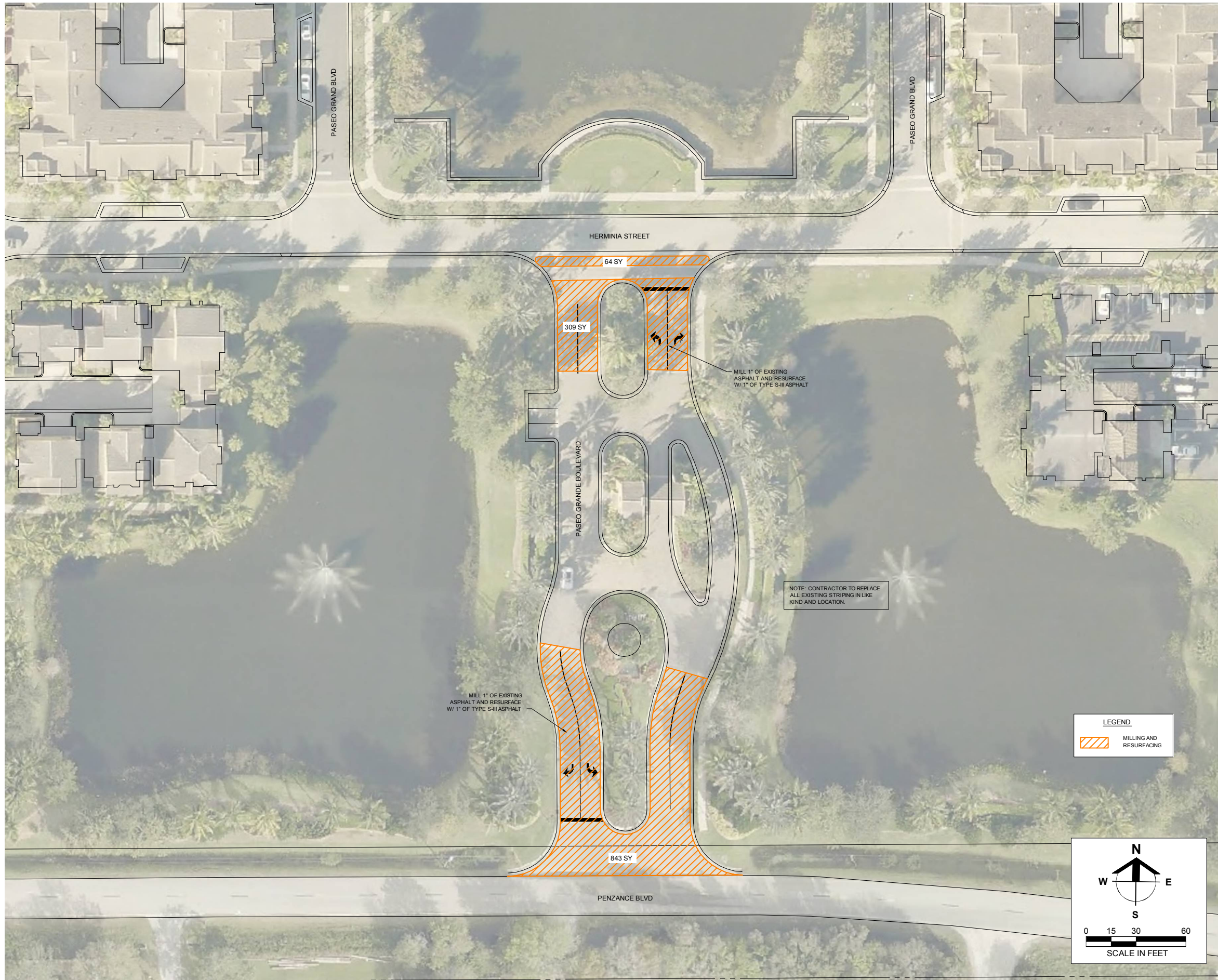
www.paseocdd.org

NOTICE OF ROADWAY REPAIRS TO BE COMPLETED

On Monday, October 15, 2018 there will be 1216 square yards of asphalt that will be milled and replaced at the entrance to the Community. A map of the repairs to be completed is below and attached to this notification. The repairs will be conducted by Russ Berner Construction. There will be traffic controls in place throughout the day while the repairs are being completed.



If you have any questions please contact the District Office.



Barraco and Associates, Inc.

CIVIL ENGINEERING - LAND SURVEYING
LAND PLANNING - LANDSCAPE DESIGN

www.barraco.net

2271 MCGREGOR BLVD., SUITE 100
POST OFFICE DRAWER 2800
FORT MYERS, FLORIDA 33902-2800
PHONE (239) 461-3170
FAX (239) 461-3169

FLORIDA CERTIFICATES OF AUTHORIZATION
ENGINEERING 7995 - SURVEYING LB-6940

PREPARED FOR

PASEO COMMUNITY DEVELOPMENT DISTRICT

9530 MARKETPLACE ROAD
SUITE 206
FORT MYERS, FL 33912

PHONE (239) 936-0913
FAX (239) 936-1815

PROJECT DESCRIPTION

PASEO

PART OF SECTIONS 9 & 10
TOWNSHIP 45 SOUTH
RANGE 25 EAST
LEE COUNTY, FLORIDA

THIS PLAN IS PRELIMINARY AND
INTENDED FOR CONCEPTUAL
PLANNING PURPOSES ONLY.

SITE LAYOUT AND LAND USE
INTENSITIES OR DENSITIES MAY
CHANGE SIGNIFICANTLY BASED
UPON SURVEY, ENGINEERING,
ENVIRONMENTAL AND / OR
REGULATORY CONSTRAINTS
AND / OR OPPORTUNITIES.

DRAWING NOT VALID WITHOUT SEAL, SIGNATURE AND DATE.
© COPYRIGHT 2018, BARRACO AND ASSOCIATES, INC.
REPRODUCTION, CHANGES OR ASSIGNMENTS ARE PROHIBITED.

| | |
|------------|---------------------------|
| FILE NAME: | Z2168_ENTRANCE_REPAIR.DWG |
| LOCATION: | J:\22168\DWG\EXHIBITS\ |
| PLOT DATE: | SUN, 8-12-2018 - 10:54 PM |
| PLOT BY: | WES KAYNE |

CROSS REFERENCED DRAWINGS

PLAN REVISIONS

PLAN STATUS

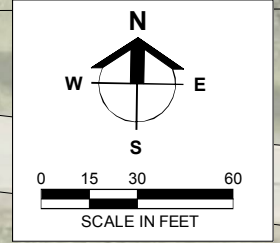
EXHIBIT ONLY
NOT FOR CONSTRUCTION

ENTRANCE REPAIR EXHIBIT

| | |
|--------------------|--------------|
| PROJECT / FILE NO. | SHEET NUMBER |
| 22168 | 1 |

LEGEND

 MILLING AND RESURFACING



SCALE IN FEET

NOTE: CONTRACTOR TO REPLACE
ALL EXISTING STRIPING IN LIKE
KIND AND LOCATION.

MILL 1" OF EXISTING
ASPHALT AND RESURFACE
W/ 1" OF TYPE S-III ASPHALT

MILL 1" OF EXISTING
ASPHALT AND RESURFACE
W/ 1" OF TYPE S-III ASPHALT